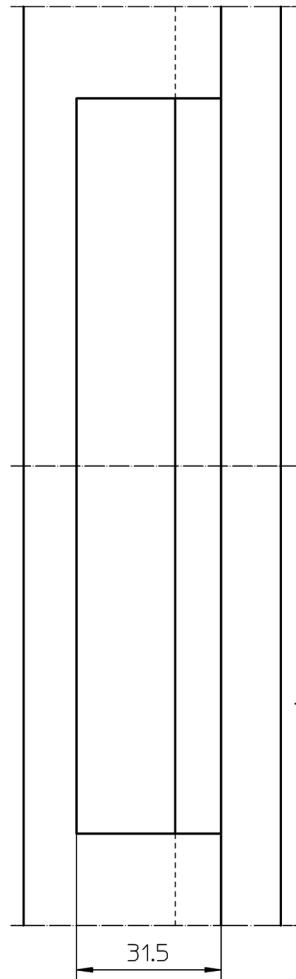
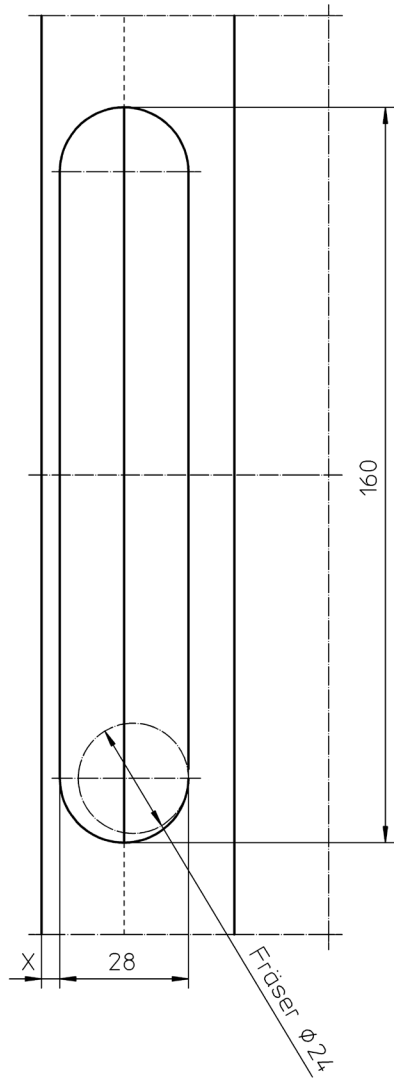
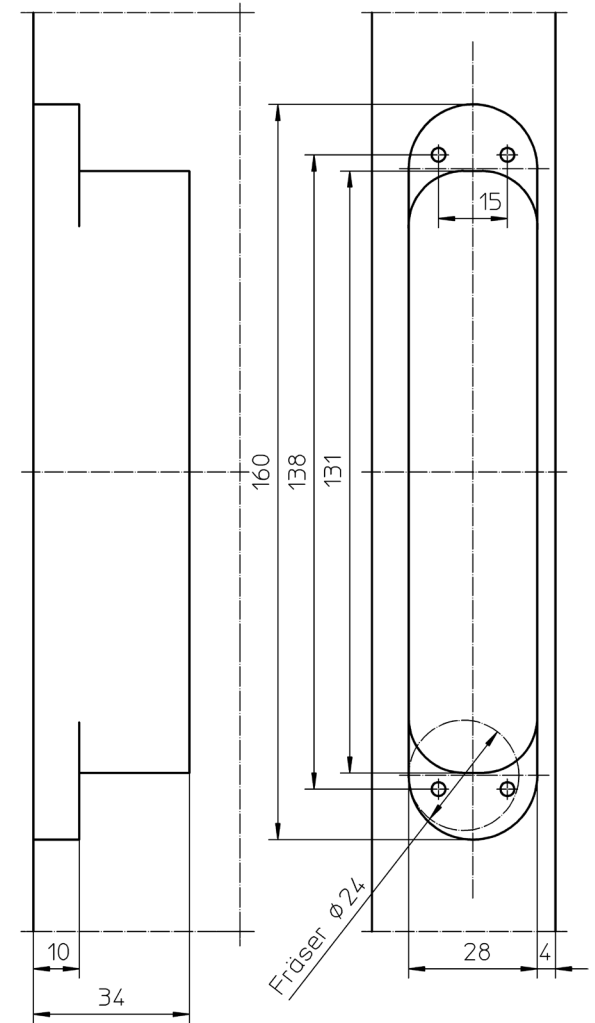
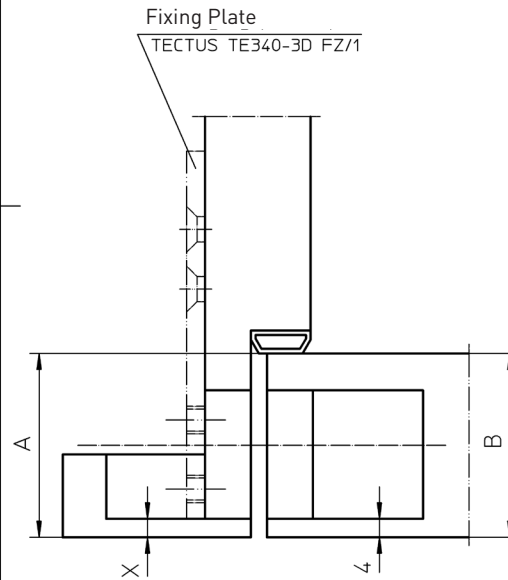


# CONCEALED HINGE : CASING FRAME



MILLING : FRAME

A = Depth of frame rebate up to sealing  
 B = Thickness of door leaf resp. 1st door rebate  
 $A - B + 4 =$  Measure X  
 The result has to be a measure between 4,0 mm and max. 7,0 mm. (Steel frame: X = 5 mm)



MILLING : DOOR LEAF